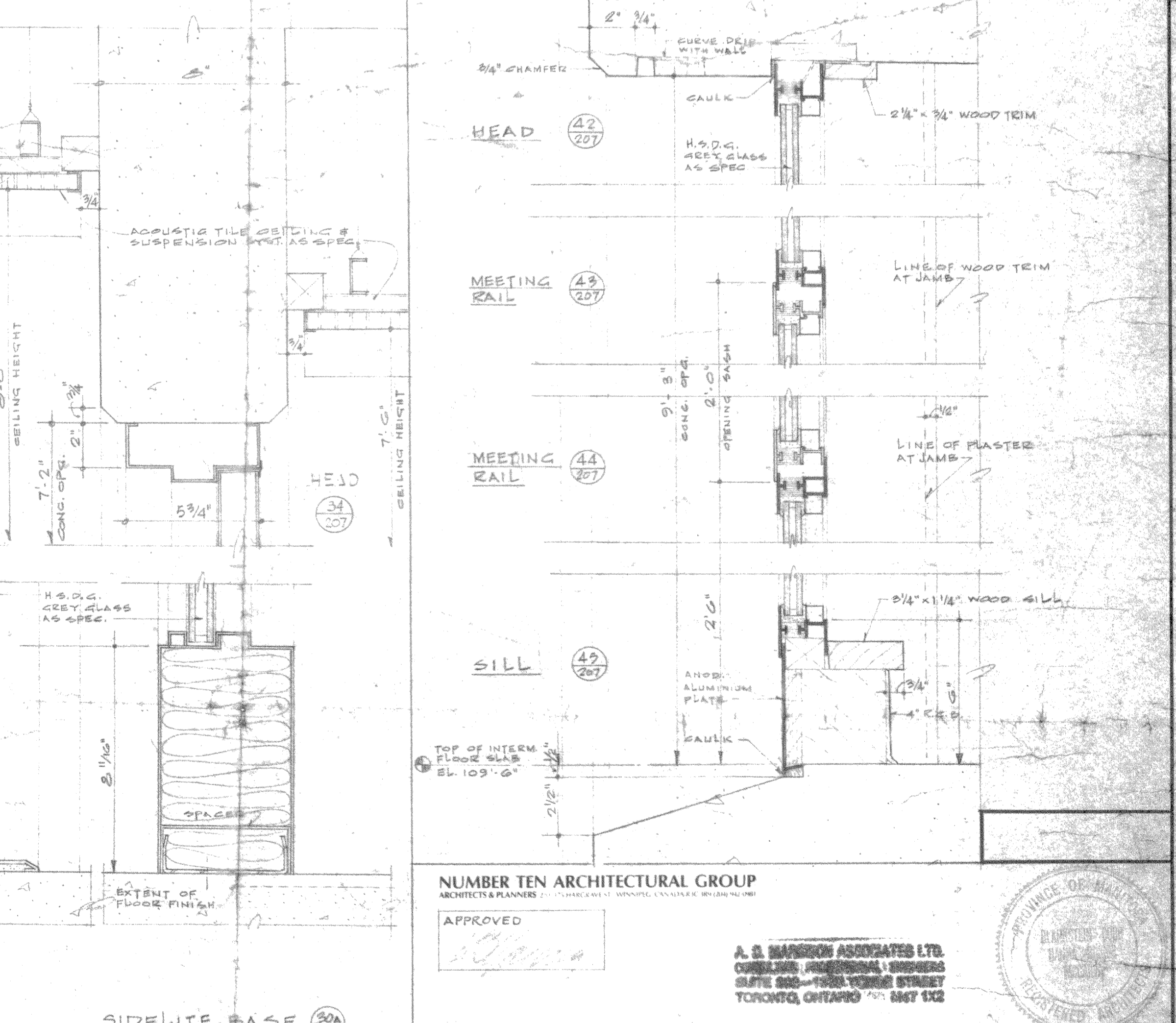
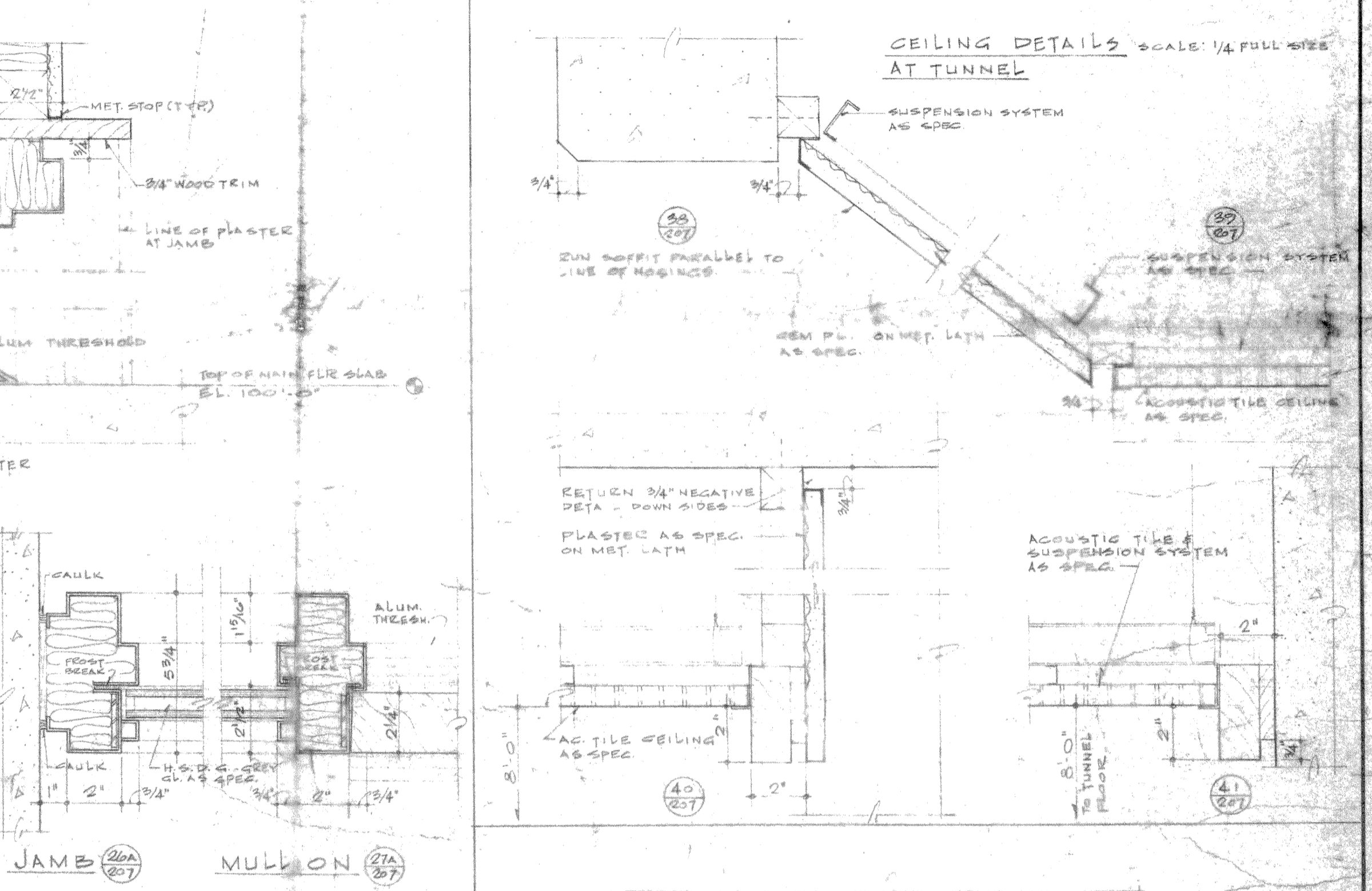
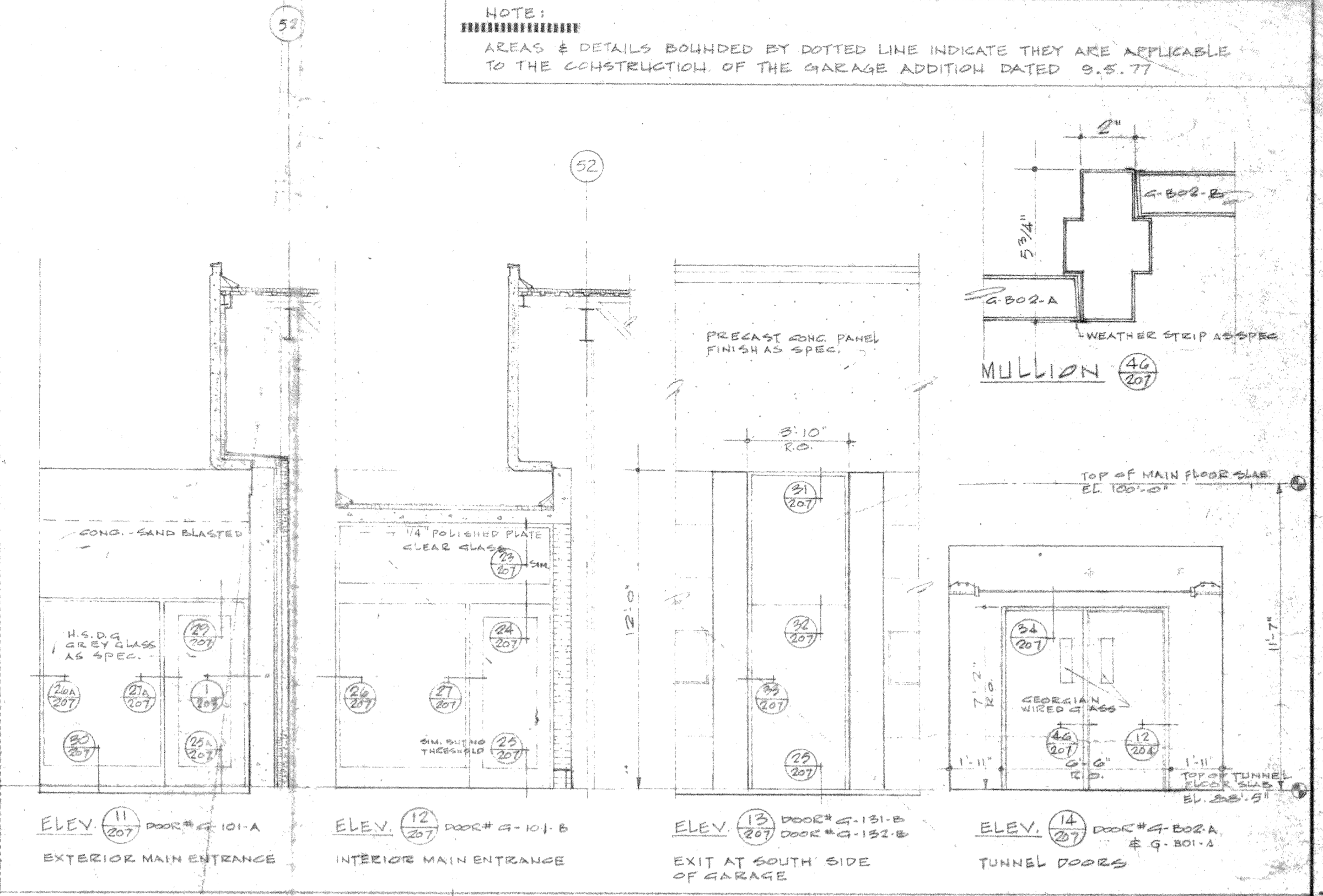
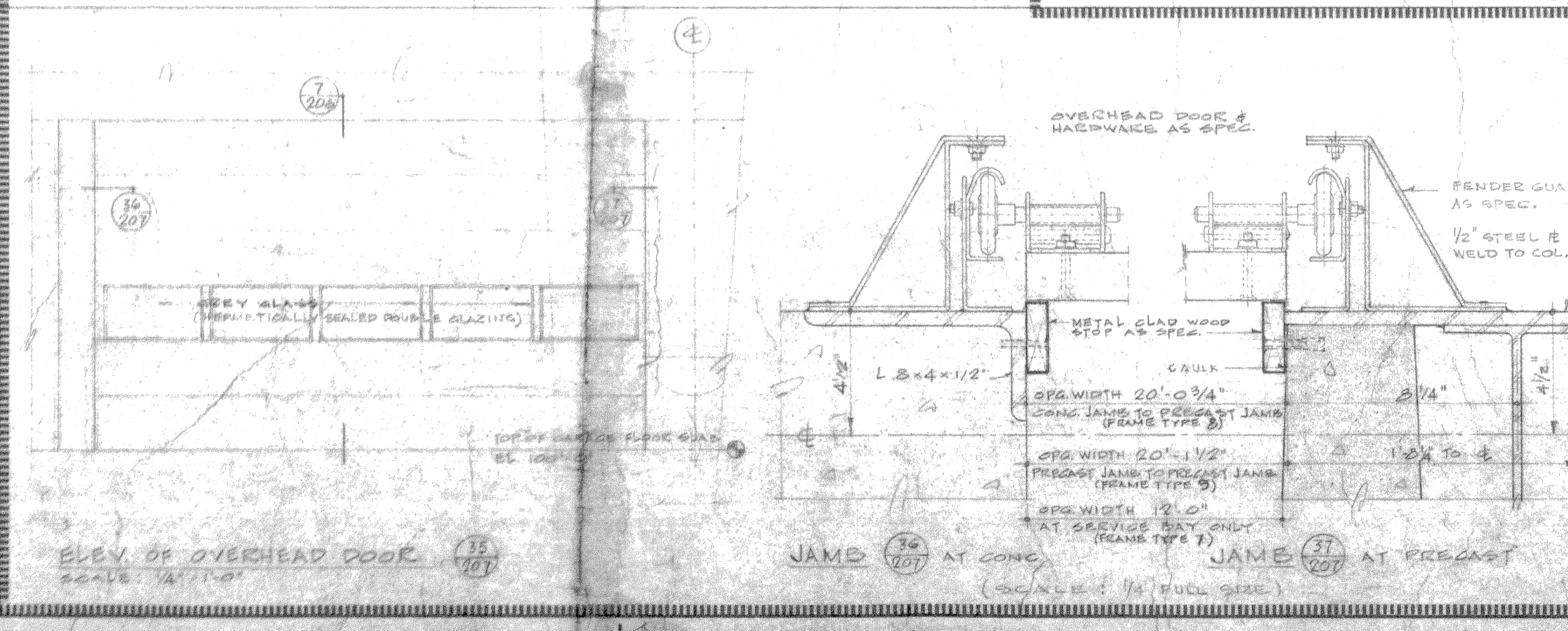
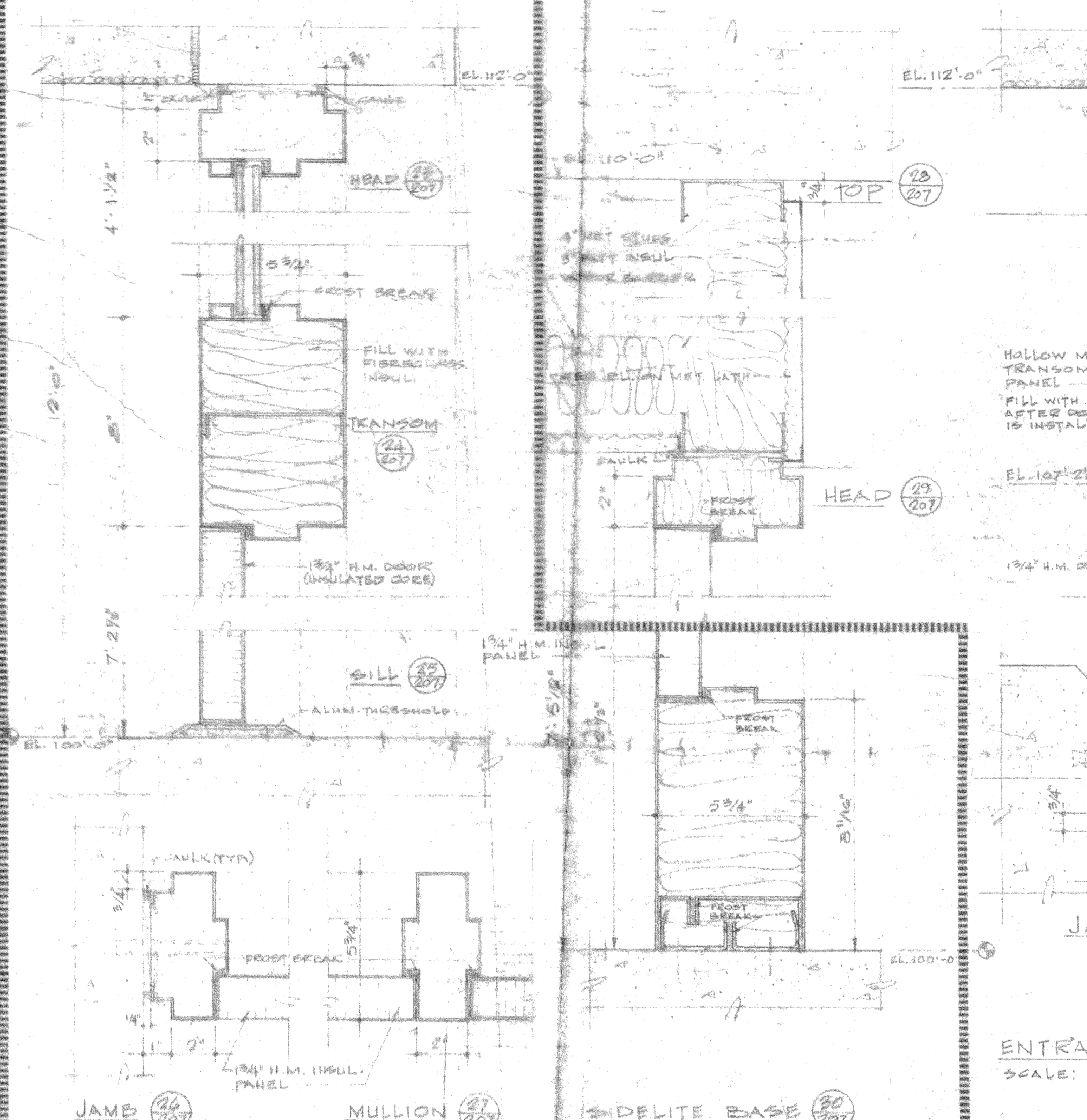
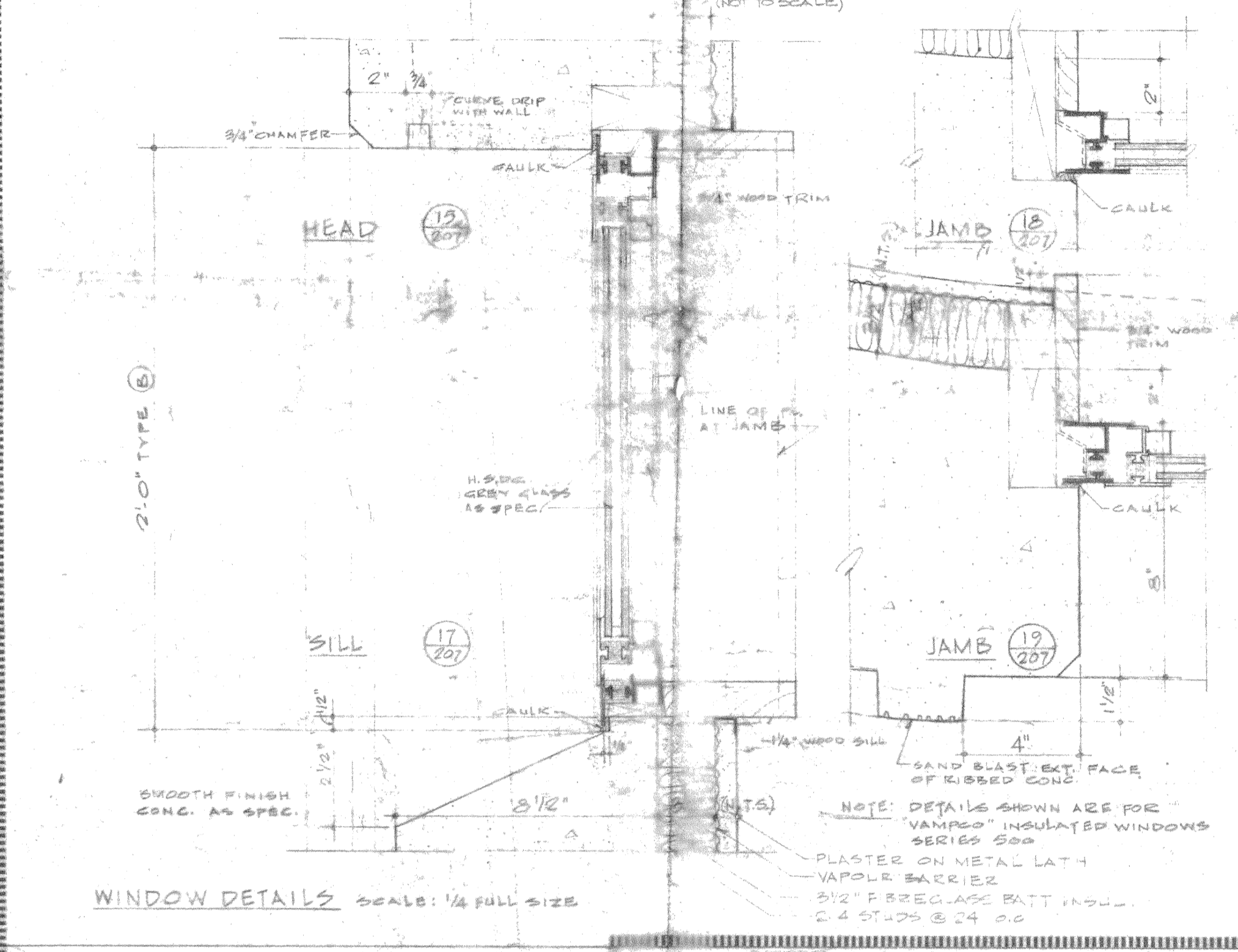
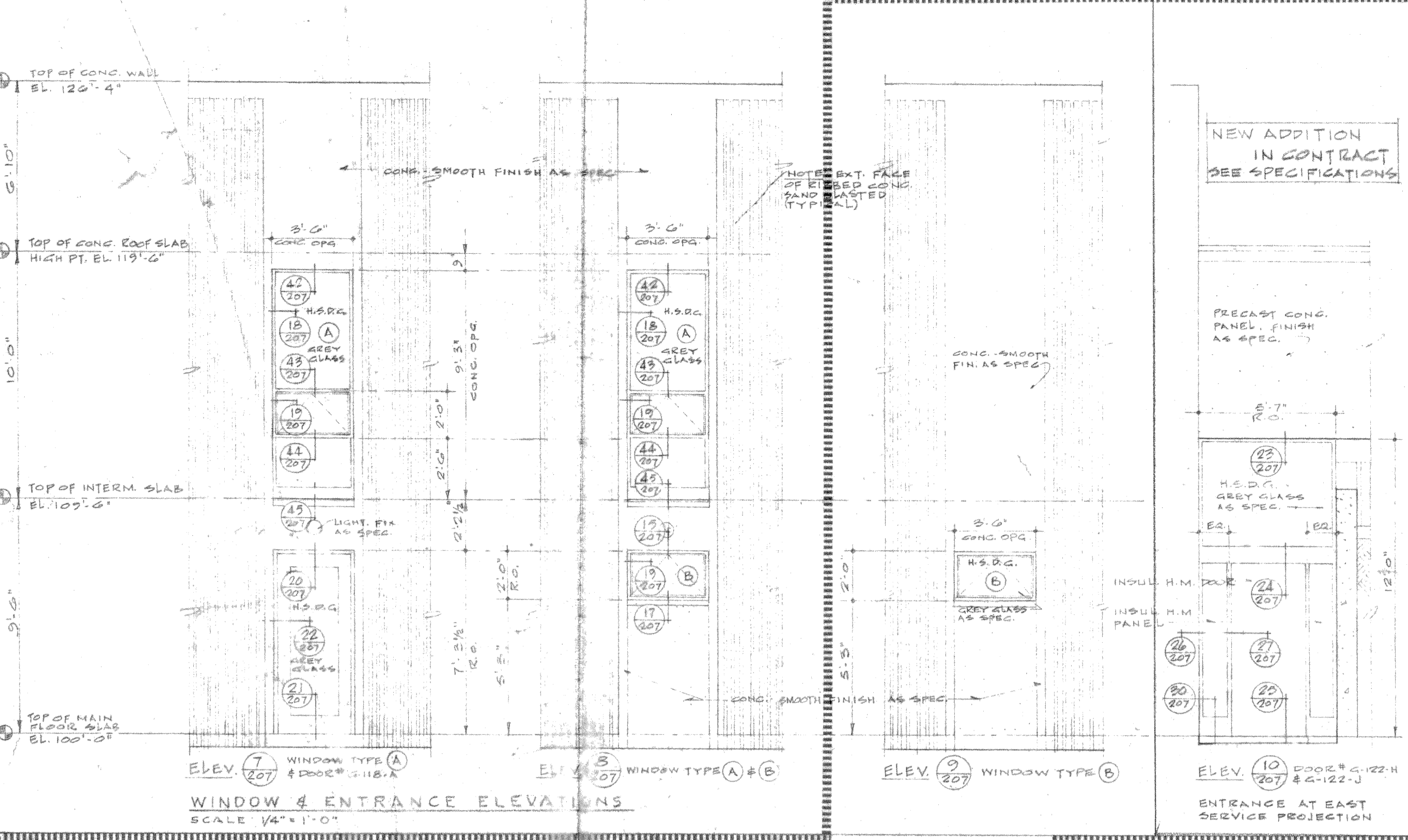
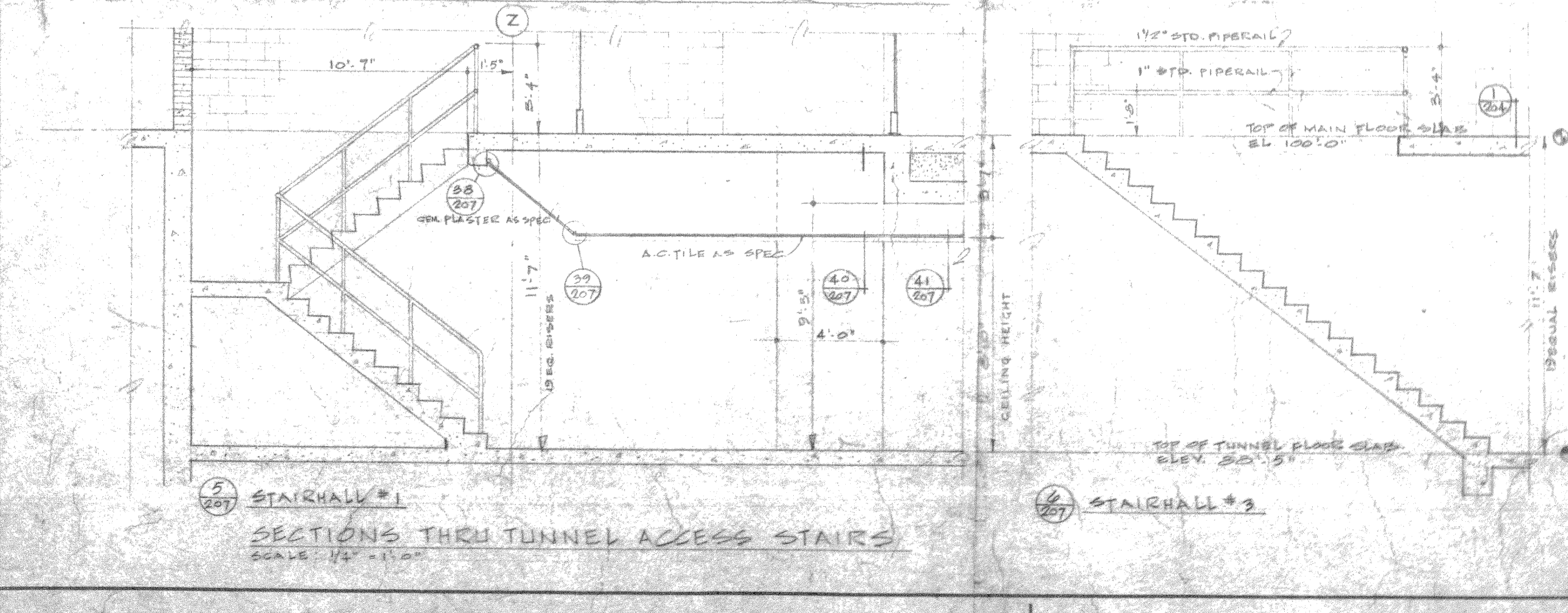
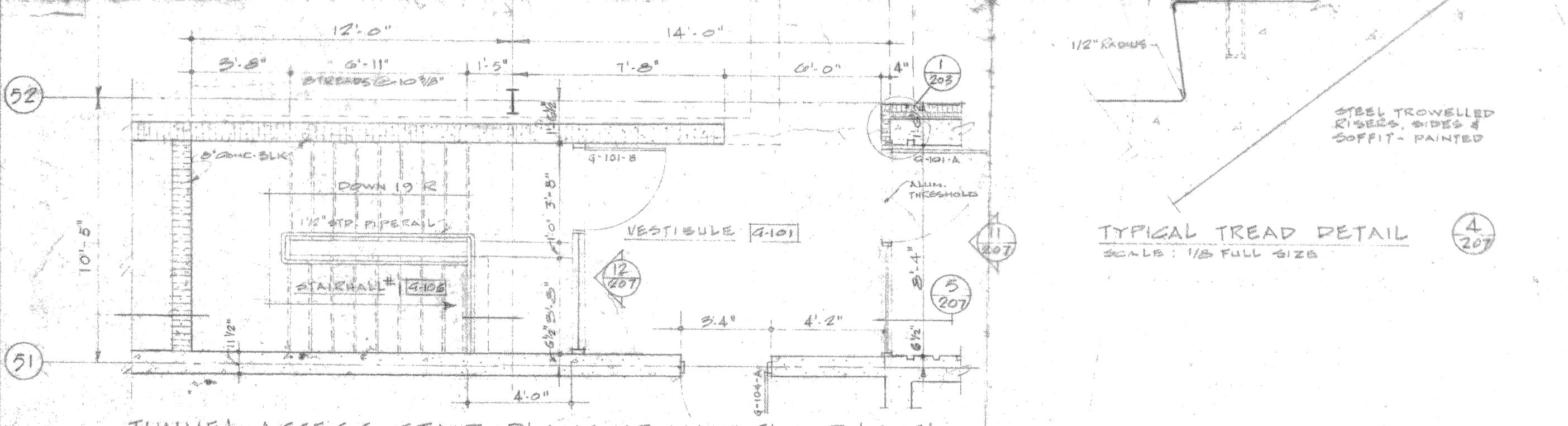
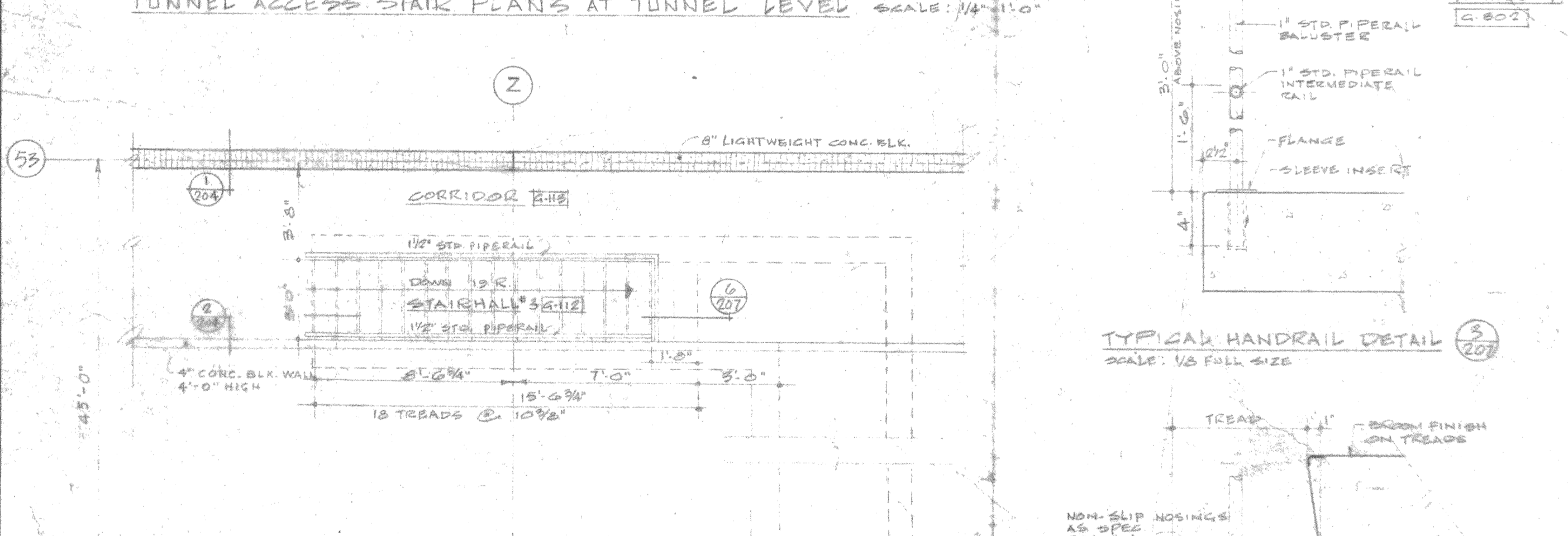
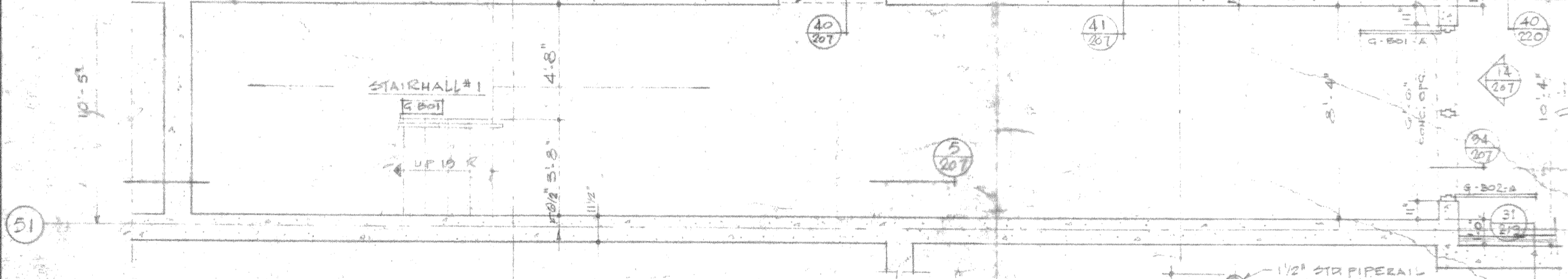
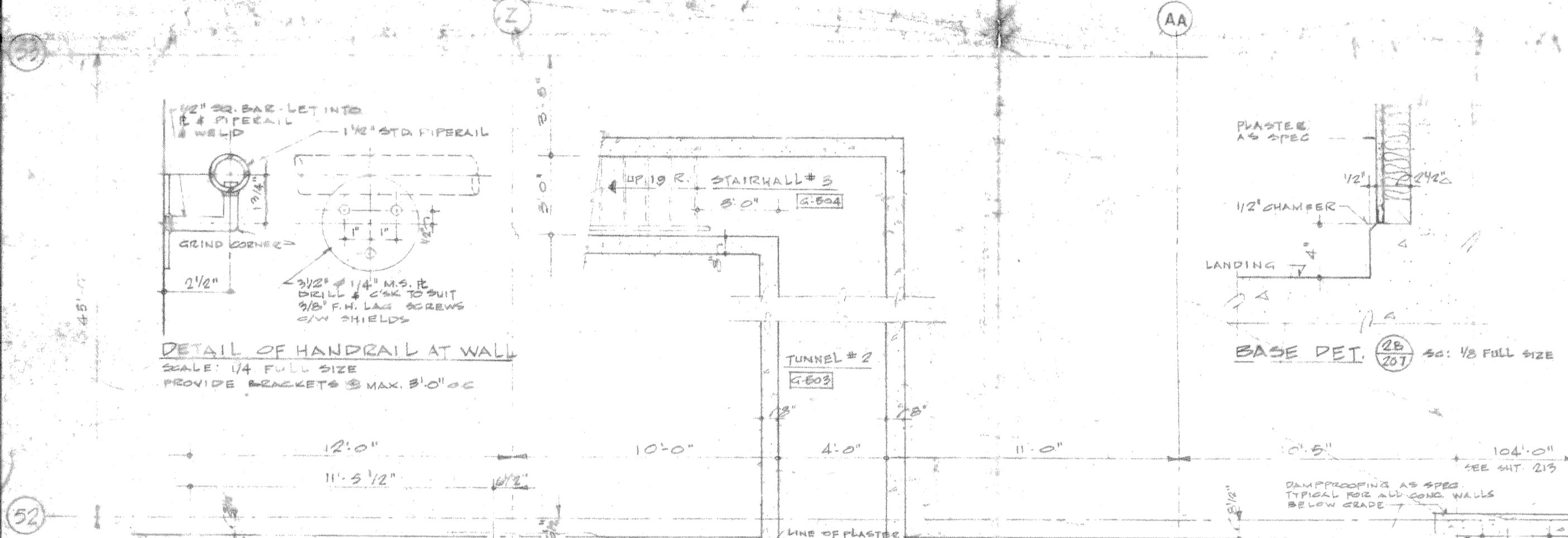
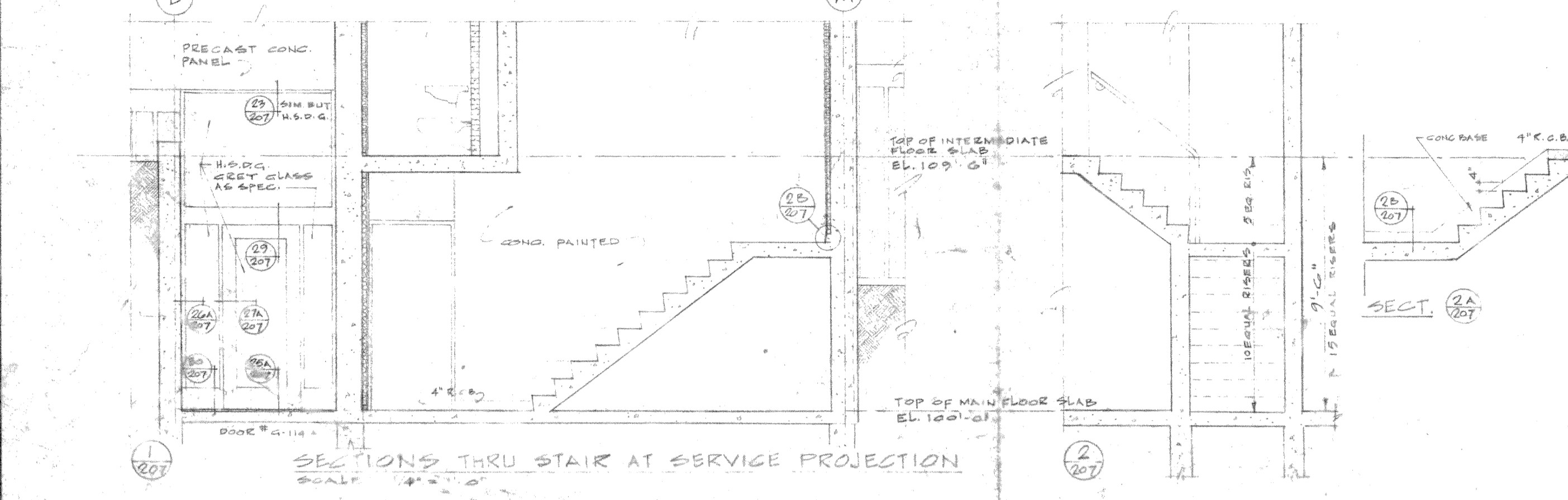


STAIR PLANS AT SERVICE PROJECTION ADJACENT TO SERVICE BAY
 NOTE: STAIR AT SOUTH-WEST SERVICE PROJ. (STAIRHALL #2) SIMILAR BUT DEVELOPED



DATE	ISSUE NO.	REV. NO.	DESCRIPTION	DRAWN BY
5.10.79	5		AS BUILT	
9.5.77	4		GARAGE ADDITION - FOR TENDER	D.A.S.
25.3.78	3		FOR CONSTRUCTION	
19.1.68	2		FOR TENDER	
22.10.67	1		FOR APPROVAL	

ISSUE OR REVISION		DATE
METROPOLITAN CORPORATION OF GREATER WINNIPEG STREETS AND TRANSIT DIVISION		
TRANSIT STORAGE AND SHOP FACILITIES GARAGE & SERVICE BAY MISCELLANEOUS DETAILS		

CONSULTING PROFESSIONAL ENGINEERS	ARCHITECTS
A. D. MARGISON AND ASSOCIATES LIMITED 115 LESLIE STREET, DON MILLS, ONTARIO	Waisman, Ross + Blankstein Coop Gillmor Hanna 10 DONALD STREET, WINNIPEG, MANITOBA
APPROVED: [Signature]	DATE: 10.12.79
CHECKED: [Signature]	SCALE: AS NOTED
DRAWN BY: [Signature]	DATE: 21.05.79
SHEET NO. 2135 - 207	ARCHITECTURAL

NOTE: AREAS & DETAILS BOUNDED BY DOTTED LINE INDICATE THEY ARE APPLICABLE TO THE CONSTRUCTION OF THE GARAGE ADDITION DATED 9.5.77